

Department of Sport and Recreation



The Western Australian Rogaining Association Presents

The Minnenooka Rogaine

12 Hour and 6 Hour, Sunday 3 June 2012



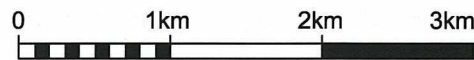
WARA thanks the following farmers and property owners for allowing us access to their land.

Nigel & Tania Moffat
Paul Camerer
Michael Bain
John & Tim Sewell
R & R Cobley
Ian, Jan & Anthony Hollins
John Oliver



LEGEND

SCALE 1:50,000, 5 metre contour interval

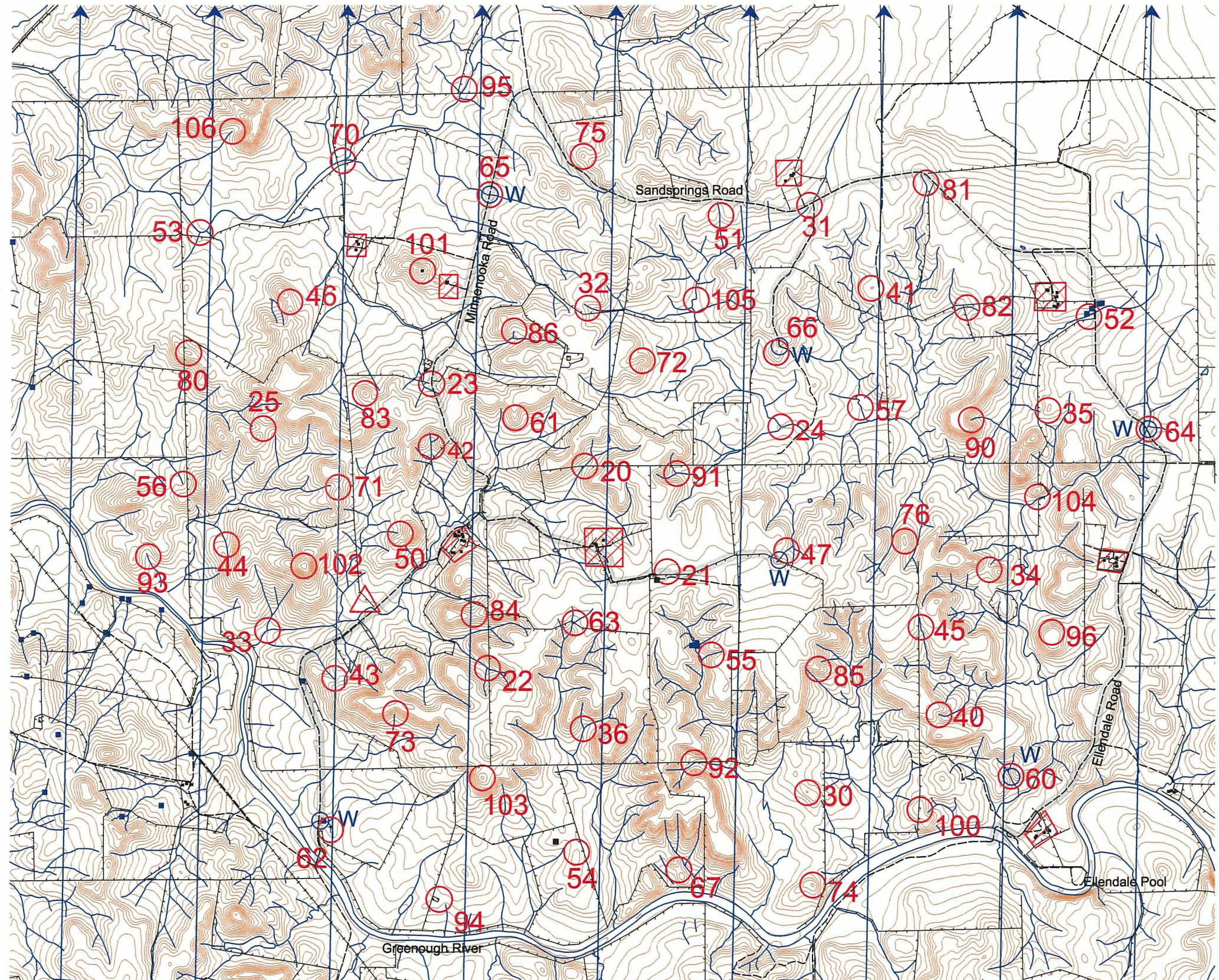


Building	■
Continuations	→ → →
Control	○ 72
Contours	~ ~ ~
Dam/Lake	■ ■ ■
Swamp	■ ■ ■
Plantation	■ ■ ■
Fence	— — —
Powerline	— — —
Rock Surface	■ ■ ■
Hash House	△
Magnetic North Line	↑
Out of Bounds	▨
Road, Sealed	— — —
Road, Major Gravel	— — —
Track	— — —
Watercourse	— — —
Water Drop	○ W
Patrolled Road	— — —

SETTERS - VETTERS

Paul Szijarto and Jim Langford

Data supplied by Landgate and used under copy licence 393/93.
Possession of this map does not give right of entry to this area.
Western Australian Rogaining Association Inc.
This map was produced using OCAD.



The Minnenooka Rogaine - 3rd June 2012

No	Control Description	Value
20	The Fence/Water Course Junction	20
21	The Cattle Yard, South East Corner	20
22	The Water Course Junction	20
23	The Fence Junction	20
24	The Water Course Junction	20
25	The Saddle	20
30	The Knoll	30
31	The Road/Track Junction	30
32	The Gully, Southern Edge	30
33	The Water Course Junction	30
34	The Saddle	30
35	The Knoll	30
36	The Water Course Junction	30
40	The Gully	40
41	The Knoll	40
42	The gully	40
43	The Gully	40
44	The Water Course	40
45	The Gully	40
46	The Saddle	40
47	The Water Course	40
50	The Gully, Head of	50
51	The Water Course	50
52	A Water Course	50
53	The Water Course Junction	50
54	The Knoll, Northern End	50
55	The Gully	50
56	The Water Course, Head of	50
57	The Water Course	50
60	The Gap, East Side	60
61	The Spur	60
62	The Windmill	60
63	The Fence/Water Course Junction	60

No	Control Description	Value
64	The Fence/Water Course Junction	60
65	The Fence/Water Course Junction	60
66	The Knoll, Rocky, Western Edge	60
67	The Saddle	60
70	The Water Course	70
71	The Saddle	70
72	The Spur	70
73	The Gully	70
74	The Knoll	70
75	The Knoll	70
76	The Knoll	70
80	The Knoll	80
81	The Gully	80
82	The Water Course	80
83	The Knoll	80
84	The Saddle	80
85	The Spur	80
86	The Water Course, Head of	80
90	The Gully	90
91	The Water Course Junction	90
92	The Water Course	90
93	The Gully	90
94	The Cattle Yard	90
95	The Water Course	90
96	The Knoll, Northern End	90
100	The Knoll	100
101	The Summit	100
102	The Knoll	100
103	The Knoll	100
104	The Water Course	100
105	The Water Course Bend	100
106	The Water Course, Head of	100

Event Information
Start: 10:00am Sunday
Finish: 4:00pm Sunday (6 Hour)
Finish: 10:00pm Sunday (12 Hour)
Sunset: 5:31pm
Moonrise: 4:25pm
Late Penalty: 10 points per minute or part minute. No points if more than 30 minutes late
Controls used: 65
Total Points: 3910
Water drops at or near controls: 47, 60, 62, 64, 65, 66

If a team member becomes sick or injured, please make your way to a water drop or a patrolled road